

ELITE MX40 CASE SURGEON

STEP BY STEP

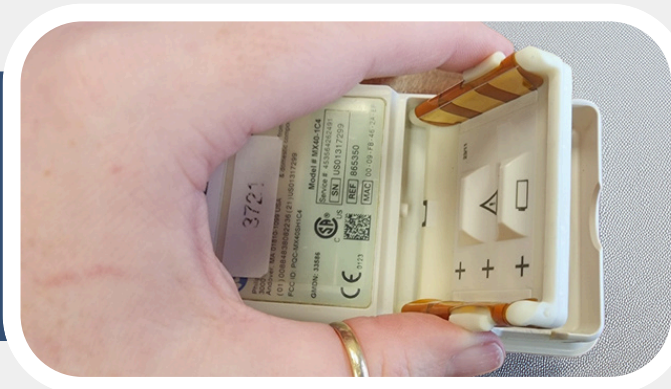


STEP ONE

Remove the battery door from the rear case

STEP TWO

Remove the battery tray (if installed)

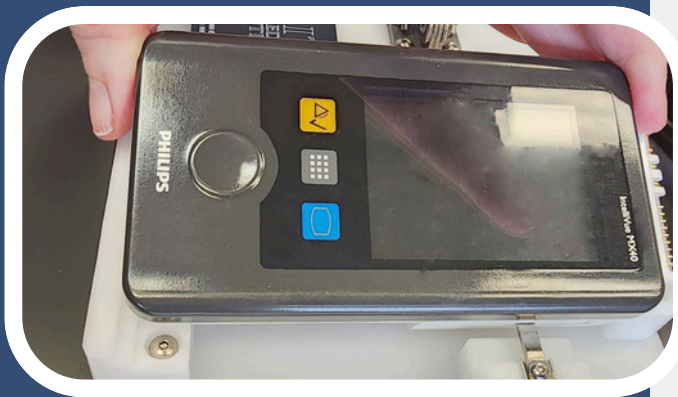


STEP THREE

Remove white labels from each side of the device (2 labels)

STEP FOUR

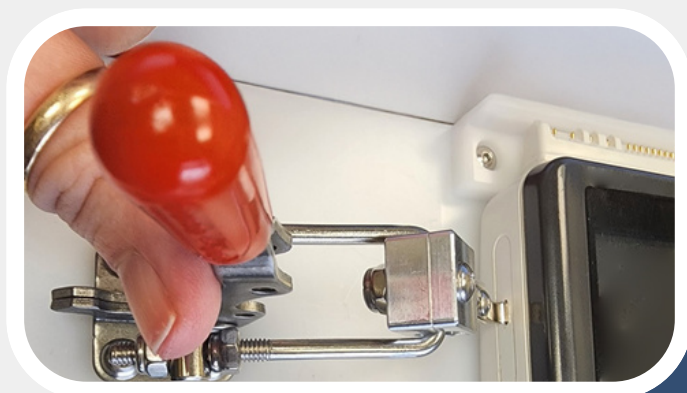
Once labels are removed, place the MX40 onto the fixture. This is done by putting the stationary hook into the slot on the right side of the device.



STEP FIVE

Slowly rotate the MX40 into the fixture, ensure that the stationary hook is still inside the slot.

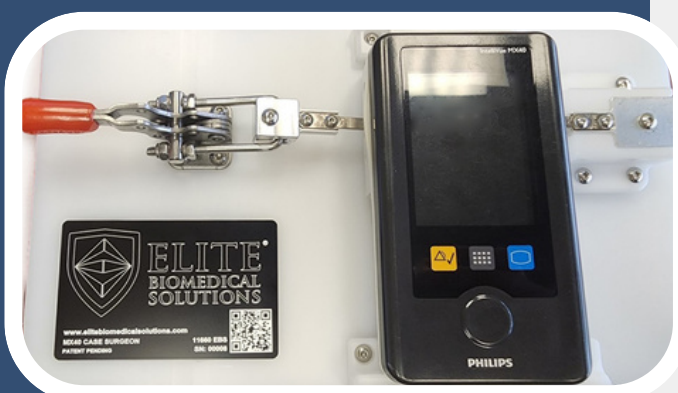
STEP SIX



After the MX40 is nested into the fixture, the movable hook is maneuvered into the slot on the left side of the device.

STEP SEVEN

When the movable hook is securely hooked on the left side, slowly use the red handle on the clamp to open the device.



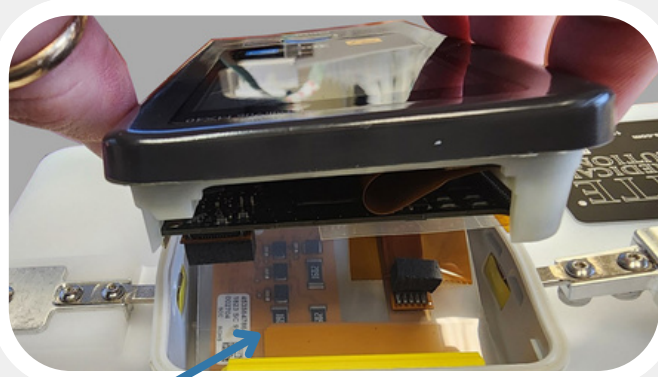
STEP EIGHT

Once the red handled clamp is fully seated (opening the case). Gently pull the top corners to remove the front case from the rear case.



STEP NINE

Carefully disengage the clamp relieving the pressure on the case.



STEP TEN

Disengage the moveable hook on the left side of the case.



STEP ELEVEN

Then rotate the MX40 toward the stationary hook to disengage the hook from the slot.

STEP TWELVE

Use extreme caution when opening the case as there is ribbon cable from the front case connected to the ECG pins on the rear case.